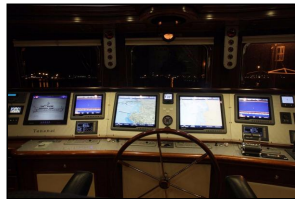




Terranova Yachts Explorer 115 – Rif.1200M



Make: Terranova Yachts
Model: Explorer 115
Length: 35 m
Price: EUR 4,500,000
Year: 2008
Condition: Used

Boat Name: Rif.1200M
Hull Material: Fibreglass (GRP)
Draft: 1.8 m
Number of Engines: 2
Fuel Type: Diesel

Rif.1200M

Boat in excellent conditions

Ready to go for the summer season 2018

Refitting 2017 New hull paint job and many other services

Refitting in 2013 for an amount of about 2.000.000eu

6 cabin lay-out + 4 crew

Private use only

Rif.1200M

Measurements

Cruising Speed:	14 kn	Displacement:	150000
Max Speed:	17 kn		kg
LOA:	35 m	Fuel Tanks Cap.:	28000
LWL:	31.05 m		L
Beam:	7.2 m	Fresh Water Tanks Cap.:	8000 L
Max Draft:	1.8 m	Number of Cabins:	6
		Number of Bathrooms:	6

Propulsion

Engine #1

Engine Make:	MAN	Hours:	800
Primary Engines:	Inboard	Power:	900 hp
Drive Type:	Shaft Drive		
Location:	Port		

Engine #2

Engine Make:	MAN	Hours:	800
Primary Engines:	Inboard	Power:	900 hp
Drive Type:	Shaft Drive		
Location:	Starboard		

Features

Electronics

- Depthsounder
- Log-Speedometer
- Wind Speed and Direction
- Repeater(s)
- Navigation Center
- DVD Player
- Radio
- CD Player
- Cockpit Speakers
- Radar
- Radar Detector
- Computer
- TV Set
- Plotter
- Autopilot
- Compass
- GPS
- VHF

Inside Equipment

- Dishwasher
- Washing Machine
- Oven
- Microwave Oven
- Air Conditioning
- Heating
- Bow Thruster
- Electric Bilge Pump
- Manual Bilge Pump
- Air Compressor
- Electric Head
- Hot Water

- Refrigerator
- Deep Freezer
- Battery Charger
- Fresh Water Maker
- Sea Water Pump

Electrical Equipment

- Shore Power Inlet
- Inverter
- Generator - 2 x 55Kw Kohler

Outside Equipment/Extras

- Teak Cockpit
- Teak Sidedecks
- Liferaft
- Cockpit Table
- Cockpit Shower
- Hydraulic Gangway
- Cockpit Cushions
- Swimming Ladder

Additional Information

Boat in excellent conditions

6 cabin lay-out

6 bathrooms

4 crew cabins

19 berths in total

Total refitting in 2013

Satin-lacquered cherry wood furniture

Cherry wall panelling

Lounge and dining area on the main deck

External dining table and seating area on the aft deck

A full beam VIP suite plus four main guest cabins, each with en suite facilities on the lower deck houses + crew

The forward looking helm station and a very private and luxurious master stateroom, boasting a large bed, a double bathroom, walk-in wardrobes and separate desk/study area on the upper deck contains. Patio style doors open out from the owner's bedroom onto a further private seating.

Disclaimer

La Società pubblica i dettagli di questa imbarcazione in buona fede e non può pertanto avallare o garantire l'esattezza di tale informazione.

All yachts offered are subject to still being available. Yacht particulars are believed to be correct but their contents are not guaranteed, neither may they be used for any contractual purposes. Specification provided for information only. Subject to prior sale, price change or withdrawal from market without notice.

All speeds, measurements, capacities, consumptions, etc. may be approximate or estimated. Specifications provided for information only. Data was obtained from sources believed to be reliable and is not guaranteed by owner or brokers. Buyer assumes the responsibility to ascertain the correctness of all data contained herein and otherwise provided and must instruct his agent and surveyors to confirm all details for accuracy prior to purchase. Subject to prior sale, price and inventory change, or withdrawal from market without notice.

Ribs, dinghies, water toys and out-board engines are not included in the sale unless otherwise stated. All negotiations and agreements are subject to exchange of final written contracts.

Photos



